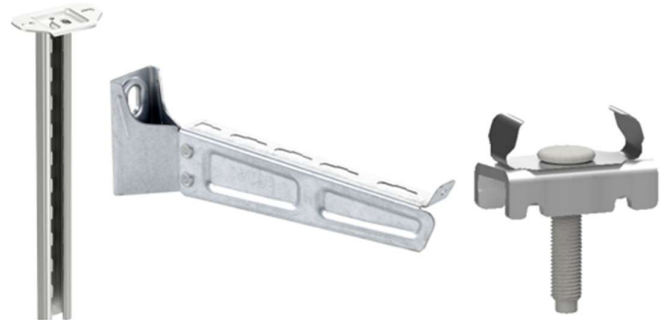


No: **GEX6132300**

REV: **00**

EU DECLARATION OF CONFORMITY

We undersigned AB WIBE declare that WIBE branded products, when subject to correct installation, maintenance and use conforming to their intended purpose, according to applicable regulations and standards in the country where they are installed, to the supplier's instructions and to accepted rules of the art comply with Essential Requirements of following European Directives.



Mr Mahesh Nanjundaiah
Head of Engineering
June 7th 2022

TYPE OF PRODUCT: System Components

MODELS: Wibe / Defem

REFERENCES: APPENDIX 1

LOW VOLTAGE: 2014/35/EU

BASED ON FOLLOWING STANDARDS: EN 61537:2007

TECHNICAL FILE: NHA5048301-02 **WG_TE_WIBE**

Accessories

OWNER

WIBE GROUP
Wibevägen 1,
792 36 Mora, Sweden

MANUFACTURER

WIBE AB
Wibevägen 1,
792 36 Mora, Sweden

No: **GEX6132300**

WG_DOC_20210013_V1.0

wibe-group.com

1/19



APPENDIX 1

| CR | Description |
|-----------|---------------------------------------|
| 731791 | Angle bracket 5L HDG |
| 731792 | Angle bracket 5L HDG White |
| 731793 | Angle bracket 5L SS316L |
| 709801 | Angle bracket 5LS HDG |
| 720529 | Angle bracket 5LS HDG White |
| 725636 | Angle bracket 5LS SS316L |
| 728653 | Clamp 12/70 Hdg |
| 732977 | Clamp 12/70 Hdg White |
| 728651 | Clamp 12/70 AISI316 |
| 728654 | Clamp 12/120 Hdg |
| 732978 | Clamp 12/120 Hdg White |
| 728652 | Clamp 12/120 AISI316 |
| 782353 | Combi Bracket 53 |
| 787223 | Insulating plate 54 |
| 717618 | End Bracket HT-11 |
| 709018 | End connection 10 |
| 714085 | End connection 10 White |
| 792727 | Pendant bar 1-300 Pre-galv. |
| 717640 | Pendant bar 1-300 Hdg |
| 717643 | Pendant bar 1-300 Hdg White |
| 792728 | Pendant bar 1-500 Pre-galv. |
| 717641 | Pendant bar 1-500 Hdg |
| 717644 | Pendant bar 1-500 Hdg White |
| CSU795328 | Pendant bar 1-500 SS316L |
| 792729 | Pendant bar 1-800 Pre-galv. |
| 717642 | Pendant bar 1-800 Hdg |
| 717645 | Pendant bar 1-800 Hdg White |
| 718903 | Pendant bar 1-1500 Hdg |
| 720530 | Pendant bar 1-1500 Hdg White |
| 708001 | Profile support piece 46 Hdg |
| 714179 | Profile support piece 46 Hdg White |
| 792877 | Prof. support piece 46 AISI316 |
| 718850 | Rail fixing support 24/20F HDG |
| 720527 | Rail fixing support 24/20F HDG White |
| 718851 | Rail fixing support 24/20FS HDG |
| 720528 | Rail fixing support 24/20FS HDG White |
| 786768 | Rod bracket 82 |
| 721105 | Wall bracket 11/25 Pre-galv. |
| 713204 | Wall bracket 11/25 Hdg |
| 713208 | Wall bracket 11/25 White |
| 725774 | Wall bracket 11/25 AISI316 |
| 721106 | Wall bracket 11/75 Pre-galv. |
| 713203 | Wall bracket 11/75 Hdg |
| 713209 | Wall bracket 11/75 White |

OWNER

WIBE GROUP
Wibevägen 1,
792 36 Mora, Sweden

MANUFACTURER

WIBE AB
Wibevägen 1,
792 36 Mora, Sweden

No: GEX6132300

WG_DOC_20210013_V1.0

wibe-group.com

2/19



| | |
|--------|----------------------------------|
| 725775 | Wall bracket 11/75 AISI316 |
| 723450 | Wall bracket 20 Hdg |
| 723451 | Wall bracket 20F Hdg |
| 735998 | Cable roller 38 Rig'n roll |
| 780186 | Cable roller Bag |
| 718660 | Cable roller S |
| 780187 | Cable roller set 66 |
| 723432 | Cantilever arm 50-100 Hdg |
| 723433 | Cantilever arm 50-150 Hdg |
| 723434 | Cantilever arm 50-200 Hdg |
| 723435 | Cantilever arm 50-250 Hdg |
| 723436 | Cantilever arm 50-300 Hdg |
| 723437 | Cantilever arm 50-400 Hdg |
| 723438 | Cantilever arm 50-500 Hdg |
| 723439 | Cantilever arm 50-600 Hdg |
| 727125 | Cantilever arm 50-700 Hdg |
| 727126 | Cantilever arm 50-800 Hdg |
| 727127 | Cantilever arm 50-900 Hdg |
| 727128 | Cantilever arm 50-1000 Hdg |
| 723440 | Cantilever arm 50-100 Hdg White |
| 723441 | Cantilever arm 50-150 Hdg White |
| 723442 | Cantilever arm 50-200 Hdg White |
| 723443 | Cantilever arm 50-250 Hdg White |
| 723444 | Cantilever arm 50-300 Hdg White |
| 723445 | Cantilever arm 50-400 Hdg White |
| 723446 | Cantilever arm 50-500 Hdg White |
| 723447 | Cantilever arm 50-600 Hdg White |
| 727782 | Cantilever arm 50-700 Hdg White |
| 727783 | Cantilever arm 50-800 Hdg White |
| 727784 | Cantilever arm 50-900 Hdg White |
| 727785 | Cantilever arm 50-1000 Hdg White |
| 725618 | Cantilever arm 50-100 AISI316 |
| 725619 | Cantilever arm 50-150 AISI316 |
| 725620 | Cantilever arm 50-200 AISI316 |
| 725621 | Cantilever arm 50-250 AISI316 |
| 725622 | Cantilever arm 50-300 AISI316 |
| 725623 | Cantilever arm 50-400 AISI316 |
| 725624 | Cantilever arm 50-500 AISI316 |
| 725625 | Cantilever arm 50-600 AISI316 |
| 718624 | Cantilever arm 50F-200 Hdg |
| 718625 | Cantilever arm 50F-300 Hdg |
| 718626 | Cantilever arm 50F-400 Hdg |
| 718627 | Cantilever arm 50F-500 Hdg |
| 718628 | Cantilever arm 50F-600 Hdg |
| 712465 | Cantilever arm 50F-1000 Hdg |
| 714021 | Cantilever arm 50F-200 Hdg White |
| 714700 | Cantilever arm 50F-300 Hdg White |

OWNER

WIBE GROUP
Wibevägen 1,
792 36 Mora, Sweden

MANUFACTURER

WIBE AB
Wibevägen 1,
792 36 Mora, Sweden

No: GEX6132300

WG_DOC_20210013_V1.0

wibe-group.com

3/19



| | |
|-----------|-----------------------------------|
| 714022 | Cantilever arm 50F-400 Hdg White |
| 718793 | Cantilever arm 50F-500 Hdg White |
| 714023 | Cantilever arm 50F-600 Hdg White |
| 714024 | Cantilever arm 50F-1000 Hdg White |
| 791412 | Cantilever arm 50i -100 PG |
| 791416 | Cantilever arm 50i -100 PG White |
| CSU795316 | Cantilever arm 50i -100 HDG |
| 791413 | Cantilever arm 50i -200 PG |
| 791417 | Cantilever arm 50i -200 PG White |
| CSU795317 | Cantilever arm 50i -200 HDG |
| 791414 | Cantilever arm 50i -300 PG |
| 791418 | Cantilever arm 50i -300 PG White |
| CSU795318 | Cantilever arm 50i -300 HDG |
| 791415 | Cantilever arm 50i -400 PG |
| 791419 | Cantilever arm 50i -400 PG White |
| CSU795319 | Cantilever arm 50i -400 HDG |
| CSU795322 | Cantilever arm 50i -500 PG |
| CSU795363 | Cantilever arm 50i -500 PG White |
| CSU795320 | Cantilever arm 50i -500 HDG |
| CSU795323 | Cantilever arm 50i -600 PG |
| CSU795364 | Cantilever arm 50i -600 PG White |
| CSU795321 | Cantilever arm 50i -600 HDG |
| 768738 | Back plate 40 Hdg |
| 714029 | Back plate 40 Hdg White |
| 717001 | Mounting rail 40S Hdg |
| 729045 | Mounting rail 40S Hdg White |
| 715675 | Beam clamp 5BK-10 Hdg |
| 716294 | Beam clamp 5BK-10 Hdg White |
| 718243 | Beam clamp 5BK-30 Hdg |
| 718487 | Beam clamp 5BK-30 Hdg White |
| 792554 | Ceiling bracket 2Fi pre-galv. |
| 721101 | Ceiling bracket 5 Pre-galv. |
| 718640 | Ceiling bracket 5 Hdg |
| 716293 | Ceiling bracket 5 Hdg White |
| 725573 | Ceiling bracket 5 AISI316 |
| 725362 | Ceiling bracket 5TP PRE-GALV |
| 713153 | Ceiling bracket 5TP Hdg |
| 716295 | Ceiling bracket 5TP Hdg White |
| 732177 | Ceiling bracket 5TPA PRE-GALV |
| 733487 | Ceiling bracket 5TPA HDG |
| 733486 | Ceiling bracket 5TPA Hdg White |
| 788164 | Ceiling bracket TF-10 Hdg |
| 788165 | Ceiling bracket TF-16 Hdg |
| 718253 | Pendant Base Plate 520 Hdg |
| 718488 | Pendant Base Plate 520 Hdg White |
| 718849 | Ceiling plate 20F Hdg |
| 720536 | Ceiling plate 20FS Hdg |

OWNER

WIBE GROUP
Wibevägen 1,
792 36 Mora, Sweden

MANUFACTURER

WIBE AB
Wibevägen 1,
792 36 Mora, Sweden

No: GEX6132300

WG_DOC_20210013_V1.0

wibe-group.com

4/19



| | |
|-----------|--|
| CSU795220 | Wall support 550 mm PG |
| CSU795221 | Wall support 550 mm PG white |
| CSU795365 | Wall support 550 mm HDG |
| CSU795366 | Wall support 550 mm Zinkpox white |
| CSU795367 | Wall support 550 mm AISI316L |
| 784061 | Threaded rod W76 M6-1000 Electro-galv. |
| 792934 | Threaded rod W76 M6-2000 Electro-galv. |
| 792935 | Threaded rod W76 M6-3000 Electro-galv. |
| 725079 | Threaded rod M8 W76 1m El-galv. |
| 729061 | Threaded rod M8 W76 2m White |
| 729062 | Threaded rod M8 W76 3m White |
| CSU794697 | Threaded rod M8 W76 1m Hdg |
| CSU794698 | Threaded rod M8 W76 2m Hdg |
| 734737 | Threaded rod M10 W76 1m El-galv. |
| 716792 | Threaded rod M10 W76 2m El-galv. |
| 716793 | Threaded rod M10 W76 3m El-galv. |
| 723925 | Threaded rod W76 M10 L=2M AISI316 |
| 723926 | Threaded rod W76 M10 L=3M AISI316 |
| 725083 | Joint nut M8 Electro-galv. |
| 724806 | Joint nut M10 Electro-galv. |
| CSU794699 | Distance nut M8 HDG |
| 724807 | Joint nut M10 AISI316L |
| CSU795600 | Cable clamp ARX1-12 Z+ |
| CSU795601 | Cable clamp ARX1-16 Z+ |
| CSU795602 | Cable clamp ARX1-22 Z+ |
| CSU795603 | Cable clamp ARX1-28 Z+ |
| CSU795604 | Cable clamp ARX1-36 Z+ |
| CSU795605 | Cable clamp ARX1-44 Z+ |
| CSU795606 | Cable clamp ARX1-52 Z+ |
| CSU795607 | Cable clamp ARX1-60 Z+ |
| CSU795608 | Cable clamp ARX1-70 Z+ |
| CSU795609 | Cable clamp ARX2-12 Z+ |
| CSU795610 | Cable clamp ARX2-16 Z+ |
| CSU795611 | Cable clamp ARX2-22 Z+ |
| CSU795612 | Cable clamp ARX2-26 Z+ |
| CSU795613 | Cable clamp ARX2-36 Z+ |
| CSU795614 | Cable clamp ARX2-44 Z+ |
| CSU795615 | Cable clamp ARX2-52 Z+ |
| CSU795616 | Cable clamp ARX2-60 Z+ |
| 709050 | Insert piece EM-12 |
| 709051 | Insert piece EM-16 |
| 709052 | Insert piece EM-22 |
| 709053 | Insert piece EM-28 |
| 709054 | Insert piece EM-36 |
| 709055 | Insert piece EM-44 |
| 709056 | Insert piece EM-52 |
| 709057 | Insert piece EM-60 |

OWNER

WIBE GROUP
Wibevägen 1,
792 36 Mora, Sweden

MANUFACTURER

WIBE AB
Wibevägen 1,
792 36 Mora, Sweden

No: GEX6132300

WG_DOC_20210013_V1.0

wibe-group.com

5/19



| | |
|-----------|----------------------------------|
| 709058 | Insert piece EM-70 |
| 736440 | Cable clamp ER 23-28 AISI316 |
| 736441 | Cable clamp ER 27-32 AISI316 |
| 736442 | Cable clamp ER 30-35 AISI316 |
| 736443 | Cable clamp ER 33-38 AISI316 |
| 736444 | Cable clamp ER 36-42 AISI316 |
| 736445 | Cable clamp ER 40-46 AISI316 |
| 736446 | Cable clamp ER 44-50 AISI316 |
| 736447 | Cable clamp ER 48-55 AISI316 |
| 736448 | Cable clamp ER 51-58 AISI316 |
| 736449 | Cable clamp ER 55-62 AISI316 |
| 736450 | Cable clamp ER 59-66 AISI316 |
| 736451 | Cable clamp ER 63-70 AISI316 |
| 736452 | Cable clamp ER 67-74 AISI316 |
| 736453 | Cable clamp ER 71-78 AISI316 |
| 736454 | Cable clamp ER 74-82 AISI316 |
| 736455 | Cable clamp ER 77-85 AISI316 |
| 736456 | Oval rung adaptor AISI316 |
| 737198 | Screw set 74S AISI316 |
| 728642 | Hook 8 Hdg |
| 725363 | Profile clamp 41 Pre-galv. |
| 720824 | Clamp 41 Hdg |
| 721945 | Clamp 41 Hdg White |
| 783374 | Clamp 41 AISI316L |
| CSU795240 | Profile clamp 42 Pre-galv. |
| CSU795360 | Profile clamp 42 Pre-galv. White |
| CSU795239 | Profile clamp 42 Pre-galv. Fire |
| CSU795242 | Profile clamp 42 Hdg |
| CSU795243 | Profile clamp 42 Hdg White |
| CSU795241 | Profile clamp 42 ZM |
| 725763 | Profile clamp 42 AISI316 |
| 768733 | Angle plate 33/1 Pre-galv. |
| 714030 | Angle plate 33/1 Pre-galv. White |
| 727340 | Angle plate 33/1 AISI316 |
| 721114 | Angle plate 33/2 Pre-galv. |
| 707748 | Angle plate 33/2 Hdg |
| 714168 | Angle plate 33/2 Hdg White |
| 727197 | Angle plate 33/2 AISI316 |
| 721122 | Coupling 22 Pre-galv. |
| CSU795289 | Coupling 22 Pre-galv. White |
| 718409 | Coupling 22 Hdg |
| 71840 | Coupling 22 Hdg White |
| 725760 | Coupling 22 AISI316 |
| 709017 | Fixed take-off hook 4 Al |
| 714067 | Fixed take-off hook 4 Al White |
| 723212 | Branch coupling 14 Pre-galv. |
| 725096 | Junction coupling 14 Hdg |

OWNER

WIBE GROUP
Wibevägen 1,
792 36 Mora, Sweden

MANUFACTURER

WIBE AB
Wibevägen 1,
792 36 Mora, Sweden

No: GEX6132300

WG_DOC_20210013_V1.0

wibe-group.com

6/19



| | |
|--------|----------------------------------|
| 790906 | Branch coupling 14 Hdg White |
| 727195 | Branch coupling 14 AISI316 |
| 732214 | Cover W5-70 2m Pre-galv. |
| 732215 | Cover W5-100 2m Pre-galv. |
| 732216 | Cover W5-150 2m Pre-galv. |
| 732217 | Cover W5-200 2m Pre-galv. |
| 732218 | Cover W5-300 2m Pre-galv. |
| 732219 | Cover W5-400 2m Pre-galv. |
| 732220 | Cover W5-500 2m Pre-galv. |
| 732221 | Cover W5-600 2m Pre-galv. |
| 732222 | Cover W5-1000 2m Pre-galv. |
| 729015 | Cover W5-70 2m Pre-galv. White |
| 729016 | Cover W5-150 2m Pre-galv. White |
| 734134 | Cover W5-100 2m Pre-galv. White |
| 729017 | Cover W5-200 2m Pre-galv. White |
| 729018 | Cover W5-300 2m Pre-galv. White |
| 729019 | Cover W5-400 2m Pre-galv. White |
| 729020 | Cover W5-500 2m Pre-galv. White |
| 729021 | Cover W5-600 2m Pre-galv. White |
| 729022 | Cover W5-1000 2m Pre-galv. White |
| 732262 | Cover W5-70 2m Hdg |
| 732263 | Cover W5-100 2m Hdg |
| 732264 | Cover W5-150 2m Hdg |
| 732265 | Cover W5-200 2m Hdg |
| 732266 | Cover W5-300 2m Hdg |
| 732267 | Cover W5-400 2m Hdg |
| 732268 | Cover W5-500 2m Hdg |
| 732269 | Cover W5-600 2m Hdg |
| 782213 | Cover W5-800 2m Hdg |
| 732270 | Cover W5-1000 2m Hdg |
| 782365 | Cover W5-150 2m Zinkpox white |
| 782366 | Cover W5-200 2m Zinkpox white |
| 782367 | Cover W5-300 2m Zinkpox white |
| 782368 | Cover W5-400 2m Zinkpox white |
| 782369 | Cover W5-500 2m Zinkpox white |
| 782370 | Cover W5-600 2m Zinkpox white |
| 782214 | Cover W5-800 2m Zinkpox white |
| 782371 | Cover W5-1000 2m Zinkpox white |
| 732291 | Cover W5-150 2m AISI316 |
| 732292 | Cover W5-200 2m AISI316 |
| 732293 | Cover W5-300 2m AISI316 |
| 732294 | Cover W5-400 2m AISI316 |
| 732295 | Cover W5-500 2m AISI316 |
| 732296 | Cover W5-600 2m AISI316 |
| 783375 | Cover W5-800 2m AISI316 |
| 732297 | Cover W5-1000 2m AISI316 |
| 732322 | Cover-150 90-bend Pre-galv |

OWNER

WIBE GROUP
Wibevägen 1,
792 36 Mora, Sweden

MANUFACTURER

WIBE AB
Wibevägen 1,
792 36 Mora, Sweden

No: GEX6132300

WG_DOC_20210013_V1.0

wibe-group.com

7/19



| | |
|-----------|---------------------------------------|
| 732323 | Cover-200 90-bend Pre-galv |
| 732324 | Cover-300 90-bend Pre-galv |
| 732325 | Cover-400 90-bend Pre-galv |
| 732326 | Cover-500 90-bend Pre-galv |
| 732327 | Cover-600 90-bend Pre-galv |
| 781802 | Cover-800 90-bend Pre-galv |
| 732328 | Cover-1000 90-bend Pre-galv |
| 781804 | Cover 90°bend 15-150 Pre-galv. White |
| 781805 | Cover 90°bend 15-200 Pre-galv. White |
| 781806 | Cover 90°bend 15-300 Pre-galv. White |
| 781807 | Cover 90°bend 15-400 Pre-galv. White |
| 781808 | Cover 90°bend 15-500 Pre-galv. White |
| 781809 | Cover 90°bend 15-600 Pre-galv. White |
| 781810 | Cover 90°bend 15-800 Pre-galv. White |
| 781811 | Cover 90°bend 15-1000 Pre-galv. White |
| 781433 | Cover 90°bend 15-150 Hdg |
| 781434 | Cover 90°bend 15-200 Hdg |
| 781435 | Cover 90°bend 15-300 Hdg |
| 781436 | Cover 90°bend 15-400 Hdg |
| 781437 | Cover 90°bend 15-500 Hdg |
| 781438 | Cover 90°bend 15-600 Hdg |
| 781793 | Cover 90°bend 15-800 Hdg |
| 781439 | Cover 90°bend 15-1000 Hdg |
| 781751 | Cover 90°bend 15/150 HDG/white |
| 781752 | Cover 90°bend 15/200 HDG/white |
| 781753 | Cover 90°bend 15/300 HDG/white |
| 781754 | Cover 90°bend 15/400 HDG/white |
| 781755 | Cover 90°bend 15/500 HDG/white |
| 781756 | Cover 90°bend 15/600 HDG/white |
| 781794 | Cover 90°bend 15/800 HDG/white |
| 781757 | Cover 90°bend 15/1000 HDG/white |
| 788639 | Cover 90°bend 15-150 AISI316 |
| 788640 | Cover 90°bend 15-200 AISI316 |
| 788641 | Cover 90°bend 15-300 AISI316 |
| 788642 | Cover 90°bend 15-400 AISI316 |
| 788643 | Cover 90°bend 15-500 AISI316 |
| 788644 | Cover 90°bend 15-600 AISI316 |
| 788645 | Cover 90°bend 15-800 AISI316 |
| 788646 | Cover 90°bend 15-1000 AISI316 |
| CSU795598 | Cover clamp Zinc+ |
| CSU795599 | Cover clamp Zinc+ White |
| 728586 | Cover clamp AISI316 |
| 782545 | Cover joint 100 HDG |
| 712639 | Cover joint 150 Pre-galv. |
| 712640 | Cover joint 200 Pre-galv. |
| 712642 | Cover joint 300 Pre-galv. |
| 712643 | Cover joint 400 Pre-galv. |

OWNER

WIBE GROUP
Wibevägen 1,
792 36 Mora, Sweden

MANUFACTURER

WIBE AB
Wibevägen 1,
792 36 Mora, Sweden

No: GEX6132300

WG_DOC_20210013_V1.0

wibe-group.com

8/19



| | |
|--------|--|
| 712644 | Cover joint 500 Pre-galv. |
| 712645 | Cover joint 600 Pre-galv. |
| 780452 | Cover joint 150 Hdg |
| 780453 | Cover joint 200 Hdg |
| 780454 | Cover joint 300 Hdg |
| 780455 | Cover joint 400 Hdg |
| 780456 | Cover joint 500 Hdg |
| 780457 | Cover joint 600 Hdg |
| 732345 | Cover-150 T-junct. Pre-galv. |
| 732346 | Cover-200 T-junct. Pre-galv. |
| 732347 | Cover-300 T-junct. Pre-galv. |
| 732348 | Cover-400 T-junct. Pre-galv. |
| 732349 | Cover-500 T-junct. Pre-galv. |
| 732350 | Cover-600 T-junct. Pre-galv. |
| 781803 | Cover-800 T-junct. Pre-galv. |
| 732351 | Cover-1000 T-junct. Pre-galv. |
| 781440 | Cover T-junction 16-150 Hdg |
| 781441 | Cover T-junction 16-200 Hdg |
| 781442 | Cover T-junction 16-300 Hdg |
| 781443 | Cover T-junction 16-400 Hdg |
| 781444 | Cover T-junction 16-500 Hdg |
| 781445 | Cover T-junction 16-600 Hdg |
| 781796 | Cover T-junction 16-800 Hdg |
| 781446 | Cover T-junction 16-1000 Hdg |
| 781765 | Cover T-junction 150 HDG/white |
| 781766 | Cover T-junction 200 HDG/white |
| 781767 | Cover T-junction 300 HDG/white |
| 781768 | Cover T-junction 400 HDG/white |
| 781769 | Cover T-junction 500 HDG/white |
| 781770 | Cover T-junction 600 HDG/white |
| 781797 | Cover T-junction 800 HDG/white |
| 781771 | Cover T-junction 1000 HDG/white |
| 788647 | Cover T-Junction 16/150 AISI316L |
| 788648 | Cover T-Junction 16/200 AISI316L |
| 788649 | Cover T-Junction 16/300 AISI316L |
| 788650 | Cover T-Junction 16/400 AISI316L |
| 788651 | Cover T-Junction 16/500 AISI316L |
| 788652 | Cover T-Junction 16/600 AISI316L |
| 788653 | Cover T-Junction 16/800 AISI316L |
| 788654 | Cover T-Junction 16/1000 AISI316L |
| 729217 | Profile support piece 37 Pre-galv. |
| 730189 | Profile support piece 37 Pre-galv. White |
| 730188 | Profile support piece 37 Hdg |
| 782382 | Profile support piece 37 Hdg White |
| 730190 | Profile support piece 37 AISI316L |
| 791337 | Cover 69-200 Bottom part |
| 791342 | Cover 69-200 Top part |

OWNER

WIBE GROUP
Wibevägen 1,
792 36 Mora, Sweden

MANUFACTURER

WIBE AB
Wibevägen 1,
792 36 Mora, Sweden

No: GEX6132300

WG_DOC_20210013_V1.0

wibe-group.com

9/19



| | |
|--------|-----------------------------------|
| 782561 | Cover 64-150 2m Hdg |
| 782562 | Cover 64-200 2m Hdg |
| 782563 | Cover 64-300 2m Hdg |
| 782564 | Cover 64-400 2m Hdg |
| 782565 | Cover 64-500 2m Hdg |
| 782566 | Cover 64-600 2m Hdg |
| 782567 | Cover 64-800 2m Hdg |
| 782568 | Cover 64-1000 2m Hdg |
| 782569 | Cover 64-150 Hdg White |
| 782570 | Cover 64-200 Hdg White |
| 782571 | Cover 64-300 Hdg White |
| 782572 | Cover 64-400 Hdg White |
| 782573 | Cover 64-500 Hdg White |
| 782574 | Cover 64-600 Hdg White |
| 782575 | Cover 64-800 Hdg White |
| 782576 | Cover 64-1000 Hdg White |
| 782585 | Cover 64-150 AISI316L |
| 782586 | Cover 64-200 AISI316L |
| 782587 | Cover 64-300 AISI316L |
| 782588 | Cover 64-400 AISI316L |
| 782589 | Cover 64-500 AISI316L |
| 782590 | Cover 64-600 AISI316L |
| 782591 | Cover 64-800 AISI316L |
| 782592 | Cover 64-1000 AISI316L |
| 732475 | Protecting plate 65-200 Pre-galv. |
| 732476 | Protecting plate 65-300 Pre-galv. |
| 732477 | Protecting plate 65-400 Pre-galv. |
| 732478 | Protecting plate 65-500 Pre-galv. |
| 732479 | Protecting plate 65-600 Pre-galv. |
| 730192 | Protecting plate 65-200 Hdg |
| 730193 | Protecting plate 65-300 Hdg |
| 730194 | Protecting plate 65-400 Hdg |
| 730195 | Protecting plate 65-500 Hdg |
| 730196 | Protecting plate 65-600 Hdg |
| 732481 | Protecting plate 65/200 AISI316 |
| 732482 | Protecting plate 65/300 AISI316 |
| 732483 | Protecting plate 65/400 AISI316 |
| 732484 | Protecting plate 65/500 AISI316 |
| 732485 | Protecting plate 65/600 AISI316 |
| 718909 | Protecting plate 65-200 White |
| 718911 | Protecting plate 65-400 White |
| 718913 | Protecting plate 65-600 White |
| 786738 | Protecting cover 300 Pre-galv. |
| 786739 | Protecting cover 400 Pre-galv. |
| 786746 | Protecting cover 300 Hdg |
| 786747 | Protecting cover 400 Hdg |
| 782299 | Insert piece W39 Pre-galv. |

OWNER

WIBE GROUP
Wibevägen 1,
792 36 Mora, Sweden

MANUFACTURER

WIBE AB
Wibevägen 1,
792 36 Mora, Sweden

No: GEX6132300

WG_DOC_20210013_V1.0

wibe-group.com

10/19



| | |
|----------|---------------------------------------|
| 716824 | Insert piece W39 Plastic Grey |
| 718835 | Divid.strip 39/24 1.75m Pre-galv. |
| 731747 | Dividing strip 39/24 1.75m Hdg |
| 717950 | Divid. strip 39/24 1.75m White |
| 725593 | Div.strip 39/24 1,75m AISI316 |
| 725785 | Divid.strip 39/55 1.75m Pre-galv. |
| 732983 | Dividing strip 39/55 1.75m Hdg |
| 725786 | Divid. strip 39/55 1.75m White |
| 725594 | Div.strip 39/55 1,75m AISI316 |
| IMT38005 | TEX-C2 M6x40 Through bolt EZ |
| IMT38006 | TEX-C2 M6x70 Through bolt EZ |
| IMT38007 | TEX-C2 M8x50 Through bolt EZ |
| IMT38008 | TEX-C2 M8x95 Through bolt EZ |
| IMT38009 | TEX-C2 M10x60 Through bolt EZ |
| IMT38010 | TEX-C2 M10x105 Through bolt EZ |
| IMT38011 | TEX-C2 M12x85 Through bolt EZ |
| IMT38012 | TEX-C2 M12x125 Through bolt EZ |
| IMT38013 | TEX-C3 M6x40 Through bolt HDG |
| IMT38014 | TEX-C3 M6x70 Through bolt HDG |
| IMT38015 | TEX-C3 M8x50 Through bolt HDG |
| IMT38016 | TEX-C3 M8x95 Through bolt HDG |
| IMT38017 | TEX-C3 M10x60 Through bolt HDG |
| IMT38018 | TEX-C3 M10x105 Through bolt HDG |
| IMT38019 | TEX-C3 M12x85 Through bolt HDG |
| IMT38020 | TEX-C3 M12x125 Through bolt HDG |
| IMT38021 | TEX-C5M M6x40 Through bolt |
| IMT38022 | TEX-C5M M6x70 Through bolt |
| IMT38023 | TEX-C5M M8x50 Through bolt |
| IMT38024 | TEX-C5M M8x95 Through bolt |
| IMT38025 | TEX-C5M M10x60 Through bolt |
| IMT38026 | TEX-C5M M10x105 Through bolt |
| IMT38040 | MMS-PAN 5x30 Concrete screw EZ |
| IMT38041 | MMS-P 5x50 Concrete screw EZ |
| IMT38033 | MMS-PAN 6x30 Concrete screw EZ |
| IMT38034 | MMS-PAN 7,5x45 Concrete screw EZ |
| IMT38037 | MMS-PAN SH 7,5x45 Concrete screw EZ |
| IMT38027 | MMS-S 7,5x35 Concrete screw EZ |
| IMT38030 | MMS-S 10x60 Concrete screw EZ |
| IMT38042 | MMS-S 6x40 Concrete screw EZ |
| IMT38038 | MMS-S 6x50 Concrete screw EZ |
| IMT38039 | MMS-S 6x60 Concrete screw EZ |
| IMT38028 | MMS-S 7,5x40 Concrete screw FXB |
| IMT38029 | MMS-S 7,5x50 Concrete screw EZ |
| IMT38043 | MMS-S 10x60 Concrete screw HDG |
| IMT38031 | MMS-S 7,5x50/65 Concrete screw SS316L |
| IMT38032 | MMS-S 10x70/85 Concrete screw SS316L |
| IMT38047 | MMS-S MF 6x40 Concrete screw EZ |

OWNER

WIBE GROUP
Wibevägen 1,
792 36 Mora, Sweden

MANUFACTURER

WIBE AB
Wibevägen 1,
792 36 Mora, Sweden

No: GEX6132300

WG_DOC_20210013_V1.0

wibe-group.com

11/19



| | |
|-----------|------------------------------------|
| IMT38048 | MMS-S MF 6x50 Concrete screw EZ |
| IMT38049 | MMS-S MF 6x60 Concrete screw EZ |
| IMT38050 | MMS-S MF 7,5x50 Concrete screw EZ |
| IMT38051 | MMS-S MF 7,5x70 Concrete screw EZ |
| IMT38044 | MMS-S MF 6x40 Concrete screw HDG |
| IMT38045 | MMS-S MF 6x60 Concrete screw HDG |
| IMT38046 | MMS-S MF 7,5x50 Concrete screw HDG |
| IMT38035 | MMS-I 7,5x60 Concrete screw EZ |
| IMT38036 | MMS-R 6x40 Ögleskruv EZ |
| IMT38052 | Mounting tool for eye screw MMS-R |
| IMT38053 | Magnetic socket driver 10x45 |
| IMT38054 | Magnetic socket driver 13x55 |
| IMT38055 | Screw bit T30 TX 30x25 |
| 732486 | Box plate 61-200 Pre-galv. |
| 732487 | Box plate 61-300 Pre-galv. |
| 732488 | Box plate 61-400 Pre-galv. |
| 732489 | Box plate 61-500 Pre-galv. |
| 732490 | Box plate 61-600 Pre-galv. |
| 732491 | Box plate 61-200 Hdg |
| 732492 | Box plate 61-300 Hdg |
| 732493 | Box plate 61-400 Hdg |
| 732494 | Box plate 61-500 Hdg |
| 732495 | Box plate 61-600 Hdg |
| 734713 | Dropper joint 32 Hdg |
| 780874 | Dropper joint 32 Hdg White |
| 791199 | Joint 21 Hdg |
| 791200 | Joint 21 Hdg White |
| CSU795051 | Joint 21 ZM |
| 725751 | Joint 21 AISI316 |
| CSU795050 | Joint 21 click-fix ZM |
| CSU795290 | Joint 21 click-fix ZM White |
| 721115 | Joint 9 Pre-galv. |
| 705304 | Joint 9 Hdg |
| 714066 | Joint 9 Hdg White |
| 721119 | Pendant joint 2J Pre-galv. |
| 713177 | Pendant joint 2J Hdg |
| 716303 | Pendant joint 2J Hdg White |
| 726484 | Pendant joint 2J AISI316 |
| CSU795325 | Pendant joint 2FJ Pre-galv. |
| 713178 | Pendant joint 2FJ Hdg |
| 716304 | Pendant joint 2FJ Hdg White |
| CSU795556 | Pendant joint 2FJ AISI316 |
| 726485 | Pendant joint 2FJ AISI316L |
| 713173 | Pendant joint 20J Hdg |
| 716302 | Pendant joint 20J Hdg White |
| 734171 | Reducer 31-100 Hdg |
| 734172 | Reducer 31-200 Hdg |

OWNER

WIBE GROUP
Wibevägen 1,
792 36 Mora, Sweden

MANUFACTURER

WIBE AB
Wibevägen 1,
792 36 Mora, Sweden

No: GEX6132300

WG_DOC_20210013_V1.0

wibe-group.com

12/19



| | |
|-----------|--|
| 734173 | Reducer 31-300 Hdg |
| 734174 | Reducer 31-400 Hdg |
| 735433 | Reducer 31-100 Hdg White |
| 735434 | Reducer 31-200 Hdg White |
| 735435 | Reducer 31-300 Hdg White |
| 735436 | Reducer 31-400 Hdg White |
| 788638 | S-bend 67 Hdg |
| 716640 | Earth terminal W79 Zinc-plated |
| 718618 | Junction box plate 35P Pre-galv. |
| 714510 | Junct.box plate 35P Pre-galv. White |
| 731745 | Junction box plate 35P Hdg |
| CSU795559 | Junction box plate 35P AISI316 |
| 725777 | Junction box plate 35P unholed AISI316 |
| CSU795353 | Junction box plate 12xRJ45 |
| 711205 | Junction box plate 35S Pre-galv. |
| 716318 | Junction box plate 35S Pre-galv. White |
| 731746 | Junction box plate 35S Hdg |
| 725776 | Junction box plate 35S AISI316 |
| 730245 | Junction box plate 35S Pre-galv. |
| 730246 | Junction box plate 35S Pre-galv. White |
| 734225 | Socket 2-way encl+Junc.b.pl35S |
| 734226 | Socket 2-way unencl+Junc.b.pl35S |
| 731962 | Junct.box IP65MP+Junc.b.pl. 35S |
| 731961 | Junct.box IP65UP+Junc.b.pl.35S |
| 783460 | Box Plate 62-100 Pre-galv. |
| 783461 | Box Plate 62-200 Pre-galv. |
| 713686 | HTR-2303 Lashing wire, stainless steel |
| 713687 | HTR-2313 Lashing wire, stainless steel |
| 713684 | HTR-2304 Lashing wire, PVC |
| 713685 | HTR-2314 Lashing wire, PVC |
| 737704 | Marking plate 93 Yellow |
| 737705 | Marking plate 93 Orange |
| 737706 | Marking plate 93 Blue |
| 737707 | Marking plate 93 Green |
| 737708 | Marking plate 93 Black |
| CSU795597 | Mounting rail WMS 25L Zinc+ |
| 717637 | Anti-corrosive paint Galvafröid |
| 739713 | Repair paint spray White |
| 768063 | Fixing rail for casting-in 24/26x53 4m Hdg |
| 709795 | Pendant/Fixing rail 24/20 3m Hdg |
| 716307 | Pendant/Fixing rail 24/20 3m Hdg White |
| 738162 | Pendant/Fixing rail 24/20 3m AISI316 |
| 709798 | Pendant/fix.rail 24/20F 3m Hdg |
| 718808 | Pendant/fix.rail 24/20F 6m Hdg |
| 716308 | Pendant/fix.rail 24/20F 3m White |
| 720525 | Pendant/fix.rail 24/20F 6m White |
| 738164 | Pendant/fix.rail 24/20F 6m AISI316L |

OWNER

WIBE GROUP
Wibevägen 1,
792 36 Mora, Sweden

MANUFACTURER

WIBE AB
Wibevägen 1,
792 36 Mora, Sweden

No: GEX6132300

WG_DOC_20210013_V1.0

wibe-group.com

13/19



| | |
|-----------|---|
| 709031 | Pend./fix.rail 24/20FS 6m Hdg |
| 720526 | Pend./fix.rail 24/20FS 6m White |
| 725357 | Pendant/Fixing rail 24/34 0.3m Pre-galv. |
| 725358 | Pendant/Fixing rail 24/34 0.4m Pre-galv. |
| 725359 | Pendant/Fixing rail 24/34 0.5m Pre-galv. |
| 725360 | Pendant/Fixing rail 24/34 0.6m Pre-galv. |
| 725361 | Pendant/Fixing rail 24/34 1m Pre-galv. |
| 721102 | Pendant/Fixing rail 24/34 3m Pre-galv. |
| 715879 | Pendant/Fixing rail 24/34 3m Hdg |
| 716309 | Pendant/Fixing rail 24/34 3m White |
| 725574 | P/F rail 24/34 0.3m AISI316 |
| 725575 | P/F rail 24/34 0.4m AISI316 |
| 725576 | P/F rail 24/34 0.5m AISI316 |
| 725577 | P/F rail 24/34 0.6m AISI316 |
| 725578 | P/F rail 24/34 1m AISI316 |
| 725579 | P/F rail 24/34 3m AISI316 |
| CSU795564 | Pendant/fix.rail 24/48 1m Pre-galv. |
| 731717 | Pendant/fix.rail 24/48 3m Pre-galv. |
| 731721 | Pendant/fix.rail 24/48 6m Pre-galv. |
| CSU795567 | Pendant/fix.rail 24/48 1m Pre-galv White. |
| CSU795292 | Pendant/fix.rail 24/48 3m Pre-galv White. |
| CSU795565 | Pendant rail 24/48 1m HDG |
| 705093 | Pendant rail 24/48 3m HDG |
| 731719 | Pendant rail 24/48 6m HDG |
| CSU795568 | Pendant rail 24/48 1m White |
| 716306 | Pendant rail 24/48 3m White |
| 731724 | Pendant rail 24/48 6m White |
| CSU795566 | Pendant rail 24/48 1m AISI316 |
| 728595 | Pendant rail 24/48 3m AISI316 |
| 731727 | Pendant rail 24/48 6m AISI316 |
| 720786 | Clamp M6-25 AISI316 |
| 725587 | Clamp M6-20 AISI316 |
| CSU795475 | U-bolt set M8 Ø32 HDG |
| CSU795515 | U-bolt set M8 Ø32 AISI316 |
| CSU795523 | U-bolt set M8 Ø20-25 HDG |
| 792863 | Round bar fix. for ceilings Hdg |
| 792864 | Round bar fix. for ceilings AISI316 |
| 792865 | Round bar fix. for floors Hdg |
| 792866 | Round bar fix. for floors AISI316 |
| 792867 | Fixing for walls Hdg |
| 792868 | Fixing for walls AISI316 |
| 718632 | Back nut M8 Hdg |
| 728649 | Screw M10X20 AISI316 |
| 715735 | Screw set 2S Hdg |
| 715736 | Screw set 20S Hdg |
| 713694 | Screw set 22S HDG |
| 725582 | Screw set 22S AISI316 |

OWNER

WIBE GROUP
Wibevägen 1,
792 36 Mora, Sweden

MANUFACTURER

WIBE AB
Wibevägen 1,
792 36 Mora, Sweden

No: GEX6132300

WG_DOC_20210013_V1.0

wibe-group.com

14/19



| | |
|-----------|---|
| CSU795277 | Screw set 25S HDG |
| CSU795587 | Screw set 25S AISI316 |
| 716407 | Spring nut M8 Hdg |
| 728622 | Spring nut M10 AISI316 |
| 718473 | Screw set W34 Electro-galv. |
| 734646 | Screw set W34 HDG |
| 725589 | Screw set W34 AISI316 |
| 716799 | Screw set W37 Electro-galv. |
| 725586 | Screw set W37 AISI 316 |
| CSU795596 | T-bolt 26U M8x30 AISI316 |
| CSU795729 | T-bolt 26U VP M8x30 AISI316 |
| CSU795592 | T-bolt 26U M10x30 AISI316 |
| CSU795593 | T-bolt 26U M10x50 AISI316 |
| CSU795595 | T-bolt 26U M8x30 HDG |
| CSU795589 | T-bolt 26U M10x30 HDG |
| CSU795590 | T-bolt 26U M10x40 HDG |
| CSU795591 | T-bolt 26U M10x50 HDG |
| 717636 | Beam attachment HT-152 Hdg |
| 713672 | Carrying bracket HT-31 Hdg |
| 713674 | Carrying bracket HT-33 Pre-galv. |
| 713675 | Carrying bracket HT-34 Pre-galv. |
| 713676 | Carrying sling HT-51 Pre-galv. |
| 713677 | Pipe HT-68 Hdg |
| 713678 | Pipe HT-68 AISI316 |
| 713679 | HT-2309 Steel wire galvanized, soft |
| 713688 | HT-2311 Steel wire 7xdiam 1,71= 16 mm ² coated, grey |
| 713681 | HTR-2322 Steel wire Stainless, hard |
| 713682 | HTR-2323 Steel wire Stainless, hard |
| 713683 | HTR-2324 Steel wire Stainless, hard |
| 713689 | Tightening loop HT-611 Hdg |
| 713690 | Tightening loop HT-621 Hdg |
| 713691 | Tightening loop HT-631 Hdg |
| 713671 | Wall bracket HT-14 Hdg |
| 721869 | Support bracket 3-200 Pre-galv. |
| 721870 | Support bracket 3-300 Pre-galv. |
| 721871 | Support bracket 3-400 Pre-galv. |
| 721872 | Support bracket 3-500 Pre-galv. |
| 721873 | Support bracket 3-600 Pre-galv. |
| 720761 | Support bracket 3-150 Hdg |
| 720762 | Support bracket 3-200 Hdg |
| 720763 | Support bracket 3-300 Hdg |
| 720764 | Support bracket 3-400 Hdg |
| 720765 | Support bracket 3-500 Hdg |
| 720766 | Support bracket 3-600 Hdg |
| 721862 | Support bracket 3-150 Hdg White |
| 721863 | Support bracket 3-200 Hdg White |
| 721864 | Support bracket 3-300 Hdg White |

OWNER

WIBE GROUP
Wibevägen 1,
792 36 Mora, Sweden

MANUFACTURER

WIBE AB
Wibevägen 1,
792 36 Mora, Sweden

No: GEX6132300

WG_DOC_20210013_V1.0

wibe-group.com

15/19



| | |
|-----------|--|
| 721865 | Support bracket 3-400 Hdg White |
| 721866 | Support bracket 3-500 Hdg White |
| 721867 | Support bracket 3-600 Hdg White |
| 726433 | Support bracket 3-150 AISI316L |
| 726434 | Support bracket 3-200 AISI316L |
| 726435 | Support bracket 3-300 AISI316L |
| 726436 | Support bracket 3-400 AISI316L |
| 726437 | Support bracket 3-500 AISI316L |
| 726438 | Support bracket 3-600 AISI316L |
| 791063 | Support bracket HSO-150 M10 Hdg |
| 791064 | Support bracket HSO-200 M10 Hdg |
| 791065 | Support bracket HSO-300 M10 Hdg |
| 791066 | Support bracket HSO-400 M10 Hdg |
| 791067 | Support bracket HSO-500 M10 Hdg |
| 791068 | Support bracket HSO-600 M10 Hdg |
| 791092 | Washer HSO M16 Hdg |
| 725065 | Tele-conduit 36/50 2m Pre-galv. |
| 725066 | Tele-conduit 36/100 2m Pre-galv. |
| 725067 | Tele-conduit 36/200 2m Pre-galv. |
| 725068 | Tele-conduit 36-50 2m Pre-galv. White |
| 725069 | Tele-conduit 36-100 2m Pre-galv. White |
| 725070 | Tele-conduit 36-200 2m Pre-galv. White |
| 731748 | Tele-conduit 36-50 2m Hdg |
| 731749 | Tele-conduit 36-100 2m Hdg |
| 731750 | Tele-conduit 36-200 2m Hdg |
| 725590 | Tele-conduit 36/50 2m AISI316 |
| 725591 | Tele-conduit 36/100 2m AISI316 |
| 725592 | Tele-conduit 36/200 2m AISI316 |
| CSU795572 | Vertical piece 2-300 EZ |
| CSU795573 | Vertical piece 2-500 EZ |
| CSU795574 | Vertical piece 2-1000 EZ |
| 717191 | Vertical piece 2-300 Hdg |
| 717192 | Vertical piece 2-400 Hdg |
| 717193 | Vertical piece 2-500 Hdg |
| 717194 | Vertical piece 2-700 Hdg |
| 717195 | Vertical piece 2-1000 Hdg |
| 716283 | Vertical piece 2-300 Hdg White |
| 716284 | Vertical piece 2-400 Hdg White |
| 716285 | Vertical piece 2-500 Hdg White |
| 716286 | Vertical piece 2-700 Hdg White |
| 716287 | Vertical piece 2-1000 Hdg White |
| 725557 | Vertical piece 2-300 AISI316 |
| 725558 | Vertical piece 2-400 AISI316 |
| 725559 | Vertical piece 2-500 AISI316 |
| 725560 | Vertical piece 2-700 AISI316 |
| 725561 | Vertical piece 2-1000 AISI316 |
| CSU795329 | Vertical piece 2F 280 EZ |

OWNER

WIBE GROUP
Wibevägen 1,
792 36 Mora, Sweden

MANUFACTURER

WIBE AB
Wibevägen 1,
792 36 Mora, Sweden

No: GEX6132300

WG_DOC_20210013_V1.0

wibe-group.com

16/19



| | |
|-----------|---|
| CSU795330 | Vertical piece 2F 505 EZ |
| CSU795331 | Vertical piece 2F 1000 EZ |
| 717196 | VERTICAL PIECE 2F/280 HDG |
| 717197 | VERTICAL PIECE 2F/370 HDG |
| 717198 | VERTICAL PIECE 2F/505 HDG |
| CSU794202 | VERTICAL PIECE 2F/640 HDG |
| 717199 | VERTICAL PIECE 2F/730 HDG |
| CSU794203 | VERTICAL PIECE 2F/865 HDG |
| 717200 | VERTICAL PIECE 2F/1000 HDG |
| 787276 | VERTICAL PIECE 2F/1500 HDG |
| 717201 | Vertical piece 2F-280 Hdg White |
| 717202 | Vertical piece 2F-370 Hdg White |
| 717203 | Vertical piece 2F-505 Hdg White |
| 717204 | Vertical piece 2F-730 Hdg White |
| 717205 | Vertical piece 2F-1000 Hdg White |
| 787277 | Vertical piece 2F-1500 Hdg White |
| 725562 | Vertical piece 2F-280 AISI316 |
| 725563 | Vertical piece 2F-370 AISI316 |
| 725564 | Vertical piece 2F-505 AISI316 |
| 725565 | Vertical piece 2F-730 AISI316 |
| 725566 | Vertical piece 2F-1000 AISI316 |
| 787278 | Vertical piece 2F-1500 AISI316 |
| 792723 | Vertical piece 2Fi-300 Pre-galv. |
| 792724 | Vertical piece 2Fi-500 Pre-galv. |
| 792725 | Vertical piece 2Fi-750 Pre-galv. |
| 792726 | Vertical piece 2Fi-1000 Pre-galv. |
| CSU795299 | Vertical piece 2Fi-1000 pre-galv. White |
| CSU795300 | Vertical piece 2Fi-300 Pre-galv. White |
| CSU795301 | Vertical piece 2Fi-400 pre-galv. White |
| CSU795302 | Vertical piece 2Fi-500 Pre-galv. White |
| CSU795303 | Vertical piece 2Fi-600 pre-galv. White |
| CSU795304 | Vertical piece 2Fi-750 Pre-galv. White |
| 788655 | Vertical piece 2FPK/300 HDG |
| 788656 | Vertical piece 2FPK/500 HDG |
| 788657 | Vertical piece 2FPK/750 HDG |
| 788658 | Vertical piece 2FPK/1000 HDG |
| 788660 | Vertical piece 2FPK-300 HDG WHITE |
| 788661 | Vertical piece 2FPK 500 HDG WHITE |
| 788663 | Vertical piece 2FPK/1000 HDG WHITE |
| CSU795332 | Vertical piece 2FB 280 EZ |
| CSU795333 | Vertical piece 2FB 505 EZ |
| CSU795334 | Vertical piece 2FB 1000 EZ |
| CSU795335 | Vertical piece 2FB 280 HDG |
| CSU795336 | Vertical piece 2FB 505 HDG |
| CSU795337 | Vertical piece 2FB 1000 HDG |
| CSU795338 | Vertical piece 2FB 280 AISI316 |
| CSU795339 | Vertical piece 2FB 505 AISI316 |

OWNER

WIBE GROUP
Wibevägen 1,
792 36 Mora, Sweden

MANUFACTURER

WIBE AB
Wibevägen 1,
792 36 Mora, Sweden

No: GEX6132300

WG_DOC_20210013_V1.0

wibe-group.com

17/19



| | |
|-----------|------------------------------------|
| CSU795340 | Vertical piece 2FB 1000 AISI316 |
| CSU794204 | Vertical piece 20-280 Hdg |
| CSU794205 | Vertical piece 20-370 Hdg |
| 715723 | Vertical piece 20-500 Hdg |
| CSU794206 | Vertical piece 20-640 Hdg |
| 715724 | Vertical piece 20-700 Hdg |
| CSU794207 | Vertical piece 20-865 Hdg |
| 715725 | Vertical piece 20-1000Hdg |
| 715726 | Vertical piece 20-1500 Hdg |
| 715727 | Vertical piece 20-2000 Hdg |
| 715728 | Vertical piece 20-3000 Hdg |
| 716276 | Vertical piece 20-500 Hdg White |
| 716277 | Vertical piece 20-700 Hdg White |
| 716278 | Vertical piece 20-1000 Hdg White |
| 716279 | Vertical piece 20-1500 Hdg White |
| 716280 | Vertical piece 20-2000 Hdg White |
| 716281 | Vertical piece 20-3000 Hdg White |
| 725567 | Vertical piece 20-500 AISI316 |
| 725568 | Vertical piece 20-700 AISI316 |
| 725569 | Vertical piece 20-1000 AISI316 |
| 725570 | Vertical piece 20-1500 AISI316 |
| 725571 | Vertical piece 20-2000 AISI316 |
| 725572 | Vertical piece 20-3000 AISI316 |
| 718249 | Vertical piece 20F-1000 Hdg |
| 718250 | Vertical piece 20F-1500 Hdg |
| 718251 | Vertical piece 20F-2000 Hdg |
| 709799 | Vertical piece 20F-3000 Hdg |
| 718484 | Vertical piece 20F-1000 Hdg White |
| 718485 | Vertical piece 20F-1500 Hdg White |
| 718486 | Vertical piece 20F-2000 Hdg White |
| 716282 | Vertical piece 20F-3000 Hdg White |
| 718718 | Vertical piece 20FS-1500 Hdg |
| 718719 | Vertical piece 20FS-2000 Hdg |
| 718720 | Vertical piece 20FS-2500 Hdg |
| 718721 | Vertical piece 20FS-3000 Hdg |
| 720521 | Vertical piece 20FS-1500 Hdg White |
| 720522 | Vertical piece 20FS-2000 Hdg White |
| 720523 | Vertical piece 20FS-2500 Hdg White |
| 720524 | Vertical piece 20FS-3000 Hdg White |
| 732151 | Profile protection 28P |
| 709019 | End plug 28 red |
| 735446 | End plug 28i red |
| 731994 | End plug 28i white |
| 789875 | End plug 28 C |
| 709020 | End plug 28 D |
| 709021 | End plug 28 E |
| 789876 | End plug 28 F |

OWNER

WIBE GROUP
Wibevägen 1,
792 36 Mora, Sweden

MANUFACTURER

WIBE AB
Wibevägen 1,
792 36 Mora, Sweden

No: GEX6132300

WG_DOC_20210013_V1.0

wibe-group.com

18/19



| | |
|-----------|----------------------|
| CSU794520 | End plug 28 J |
| 726668 | Cross member plug 27 |

OWNER
WIBE GROUP
Wibevägen 1,
792 36 Mora, Sweden

MANUFACTURER
WIBE AB
Wibevägen 1,
792 36 Mora, Sweden

No: **GEX6132300**
WG_DOC_20210013_V1.0
wibe-group.com **19/19**